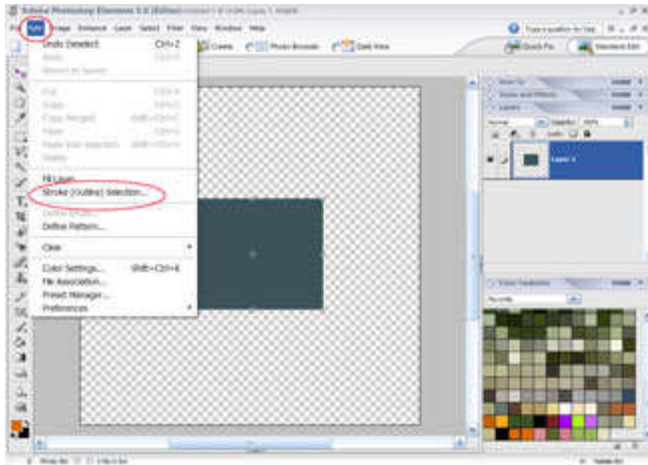
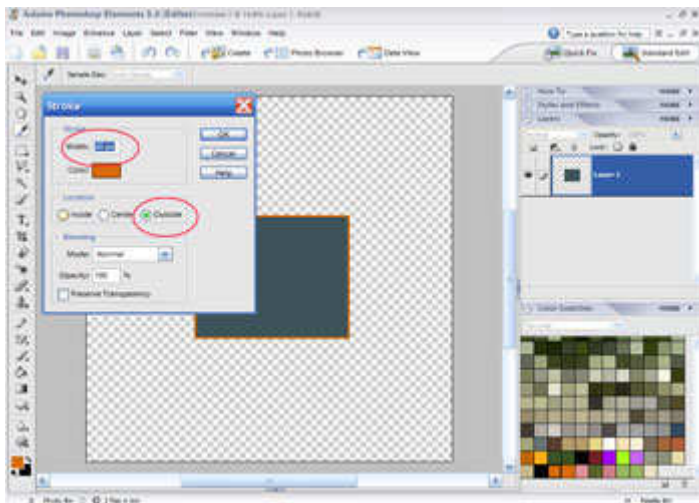


Stroke and Border Tutorial By Hummie

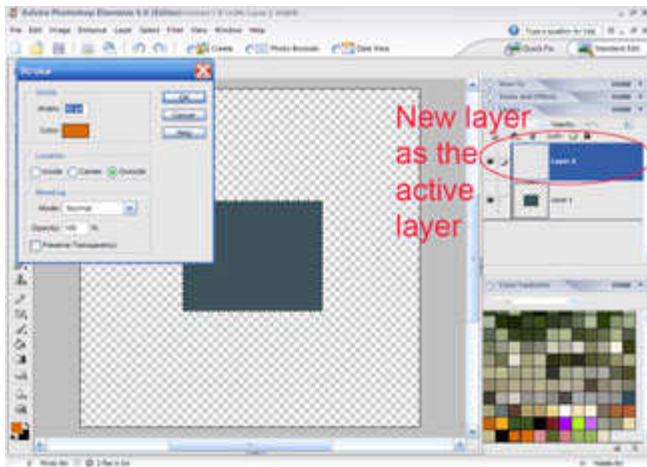
To put a border around a photo or an element, the stroke tool is used.



For this tutorial, I drew a box with my selection tool and filled it in with the paint brush. It is not necessary, but my preferred method is to first choose the color I want my border to be as the foreground color. Often, I will use the eyedropper tool to obtain a color from the photo or one of the papers I am using in my layout. To put a border around the box, with the layer as the active layer, go to the edit drop down menu and choose "Stroke (Outline) Selection."

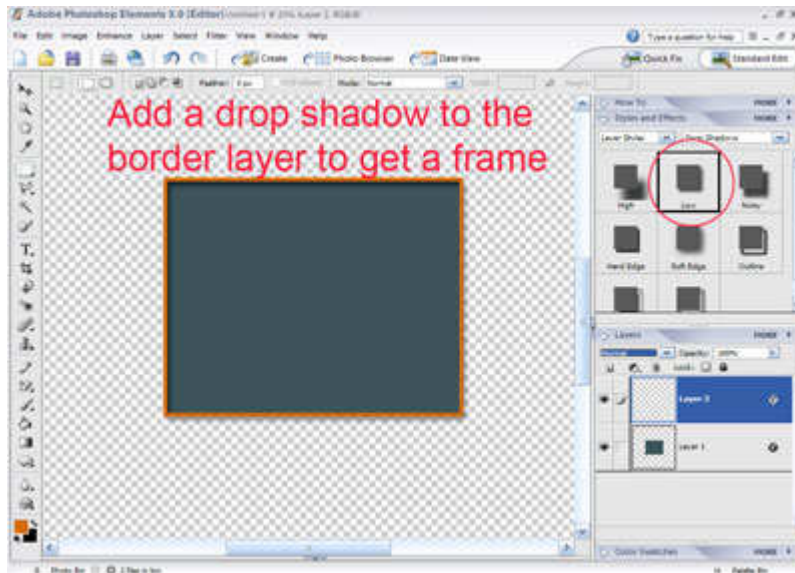


Next, choose the width of your border. A smaller number results in a thinner border. Note that the color is the same as my foreground color. Double click on the square if you want to change the color. For most purposes, choose to put the border on the outside of the selection and the blending mode is set at "normal." Click OK. Note the orange border around my box.

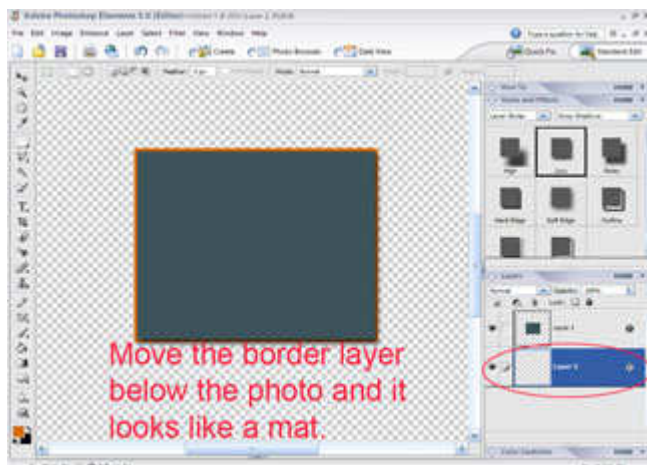


Follow the above steps through the edit menu to apply the stroke.

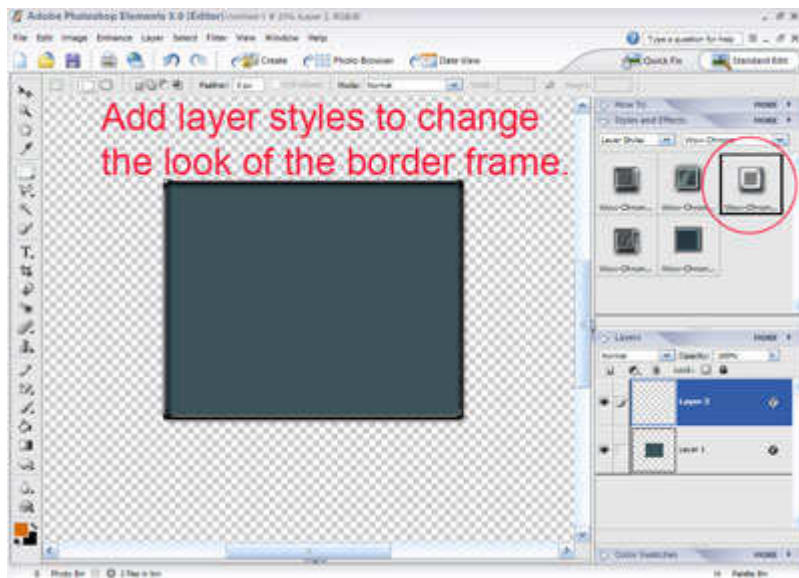
It is not always best to put the border on the same layer as the object you are bordering. Putting the border on a new layer offers opportunities for other techniques. Create a new layer. Hold down the control key and click on the box layer to make a selection of it (do you see marching ants?) It is important to be certain that the new blank layer is the active layer. If it is not, click on it in the layer's palette.



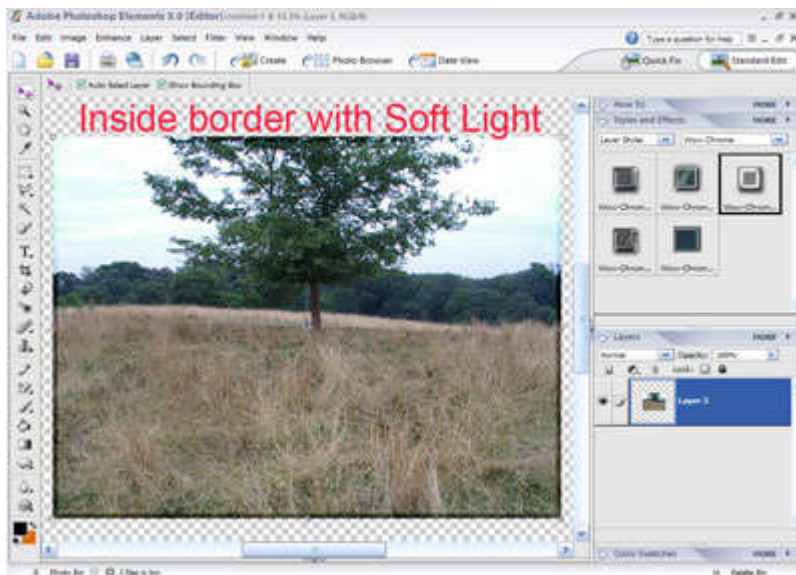
With the border layer as the active layer, styles may now be applied to only the border. Add a drop shadow to the border to get the effect of a frame.



Drag the border layer with your mouse below the photo (my box) layer to achieve the look of a mat. This is especially useful if you want to mat a photo that has been cut into a unique shape. Of course, the photo (my box) has a drop shadow on the layer to complete the effect of a mat.



Now the fun comes! Play around with all of the other layer styles to see what you can come up with. In my example below, I have added the Wow Chrome layer style to the border for a metal frame look.



There are so many possibilities with the stroke tool that I cannot show them all. What is so addictive about this program is that playing results in so many unique results. PSE is my toy and I love to play! I will share one more example as shown below. On my photo I have applied an "inside" stroke with a "soft light" blending

mode to achieve a unique overlay around the edges of my photo. Have fun!