

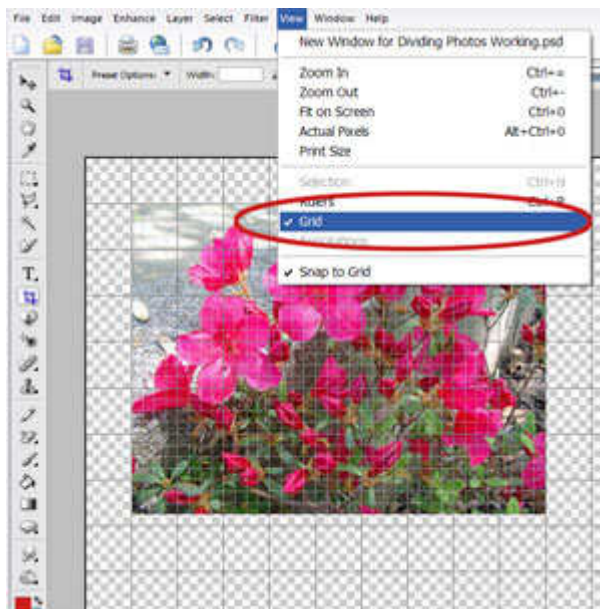
Dividing/Slicing Photos Tutorial

By Hummie



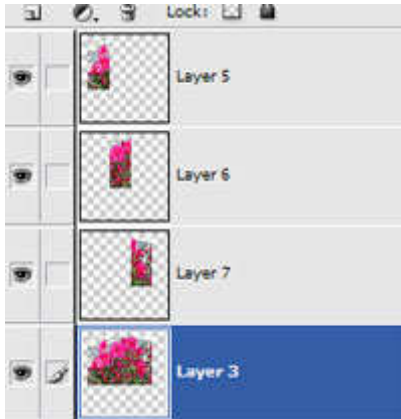
Here is a layout I did the first time I ever attempted this technique.

The most common slicing of photos is to divide them into thirds. The “rule of thirds” makes this a pleasing division to the eye.



In your layout file, with your chosen photo (mine is of some azaleas in my yard), turn on the grid from the View drop down menu by clicking on it so a checkmark appears in front of the word. It is also helpful for the Snap to Grid to be activated.

Next, grab the corners of your photo and resize them so that the photo fills three equal parts. In my sample, I chose to fill 9 horizontal boxes; however, 6 would have worked as a number divisible by 3 also.

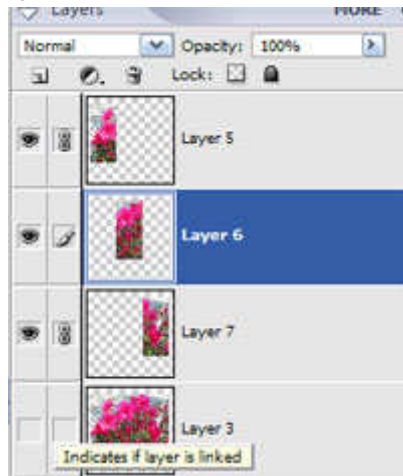


Using the rectangle marquee tool, draw a selection with the mouse for the first one-third of the photo, following the gridlines. In my sample, I included three columns of the grid in my selection.

With the photo layer as the active layer, hit Control J to put the selection on a new layer.

Make a new selection with the middle third of the photo. It is important to watch the layer's palette before hitting Control J again as the photo layer will need to be made the active layer again before copying the new selection to a new layer.

Make a third selection of the last third of the photo and put that selection on a new layer. The layer's palette will now have three new layers, each with one-third of the photo on it.



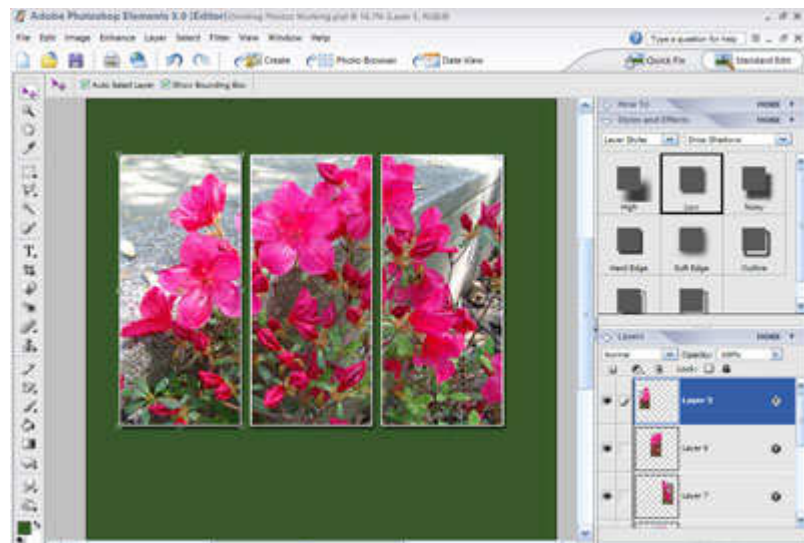
Click on the eye to make the original photo invisible and link together the three separate layers in order to resize them the same to fit the layout.

Unlock the layers and use the right and the left arrow keys to nudge the right and left sections of the photo the same amount of nudges (clicks) to obtain an equal distance between the sections.

Lock the three layers together again, if needed, to reposition or re-center.

Add a stroke/border to each section.

Add a drop shadow to each section.





Variations of this technique are only within your imagination.

Try tilted the photos in a variety of way.

Move the layers so that the photos stack upon each other differently.



Although it can create an interesting effect to have a division cut a person's body of face, on this sample, I resized the photo to 9 squares on the grid and divided the pieces unevenly as 3/3/4 squares.

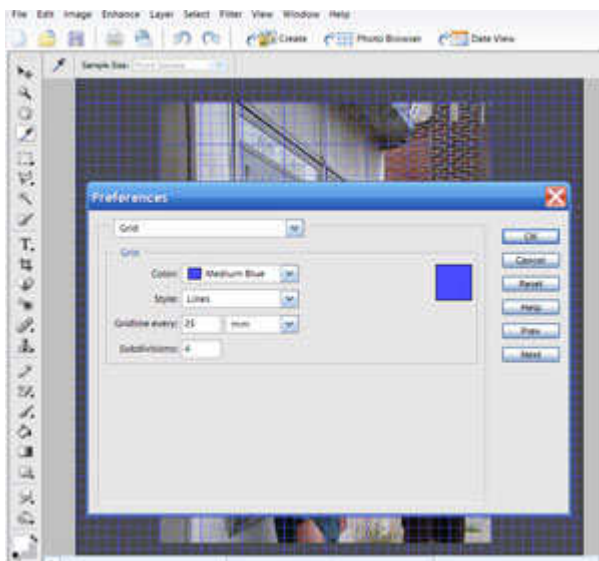


On this sample, two of the layers are black and white (Enhance/Adjust Color/Remove Color) to bring the focal point to the guys.



This sample contains a progressive division utilizing 9 horizontal squares divided as 2/3/5 squares. A progressive division can be utilized to lead the eye to other parts of the layout.

Remember, photos may also be sliced into only 2 or perhaps sliced into more divisions such as 4 or 5.



My background and the grid were both shades of grey and it was difficult to see the grid. The color of the grid may be changed in the Edit drop down menu, then Preferences, and click on Grid.

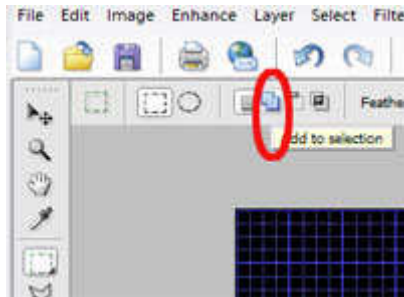


On this sample, both the horizontal and the vertical grid lines were utilized to slice the photo into four pieces. The pieces are uneven both horizontally and vertically. The first block was created on the bottom left of the photo so that my son was not divided. The other three pieces were created from the remaining blocks.

Change the background pieces to another tone. There are selections of tones under the layer styles.

Tilt the selections and move them inward so that they stack upon each other.

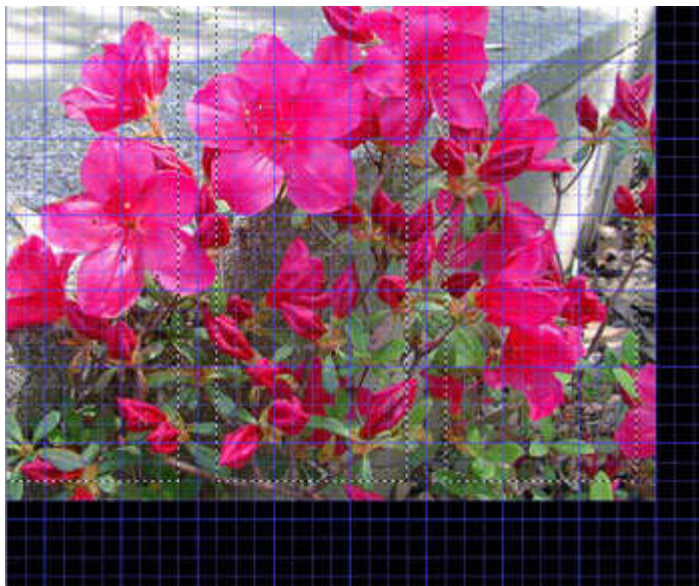
The white border around all of the photos is made by making a selection of the black background, hitting Control J to put the selection on a new layer, and adding a thin border.



There is always more than one way to achieve an technique. This method is inhibiting because it does not allow for moving and tilting of photos. In addition, it covers up some of the photo.

This method utilizes the “add to selection” option on the rectangle selection tool.

First, may a new blank layer which will become a frame.



Utilizing the subdivisions within the squares on the grid, create three selections.



Inverse the selection (Select drop down menu/Inverse or hit Shift/Control/I or the keyboard).

Use the paint tool to create the frame on the new layer. (Later, you may wish to crop the frame). This frame is painted black.



Add a border/stroke to the frame.

Add a bevel to the frame.